

Directly integrating your Zurich risk and insurance information

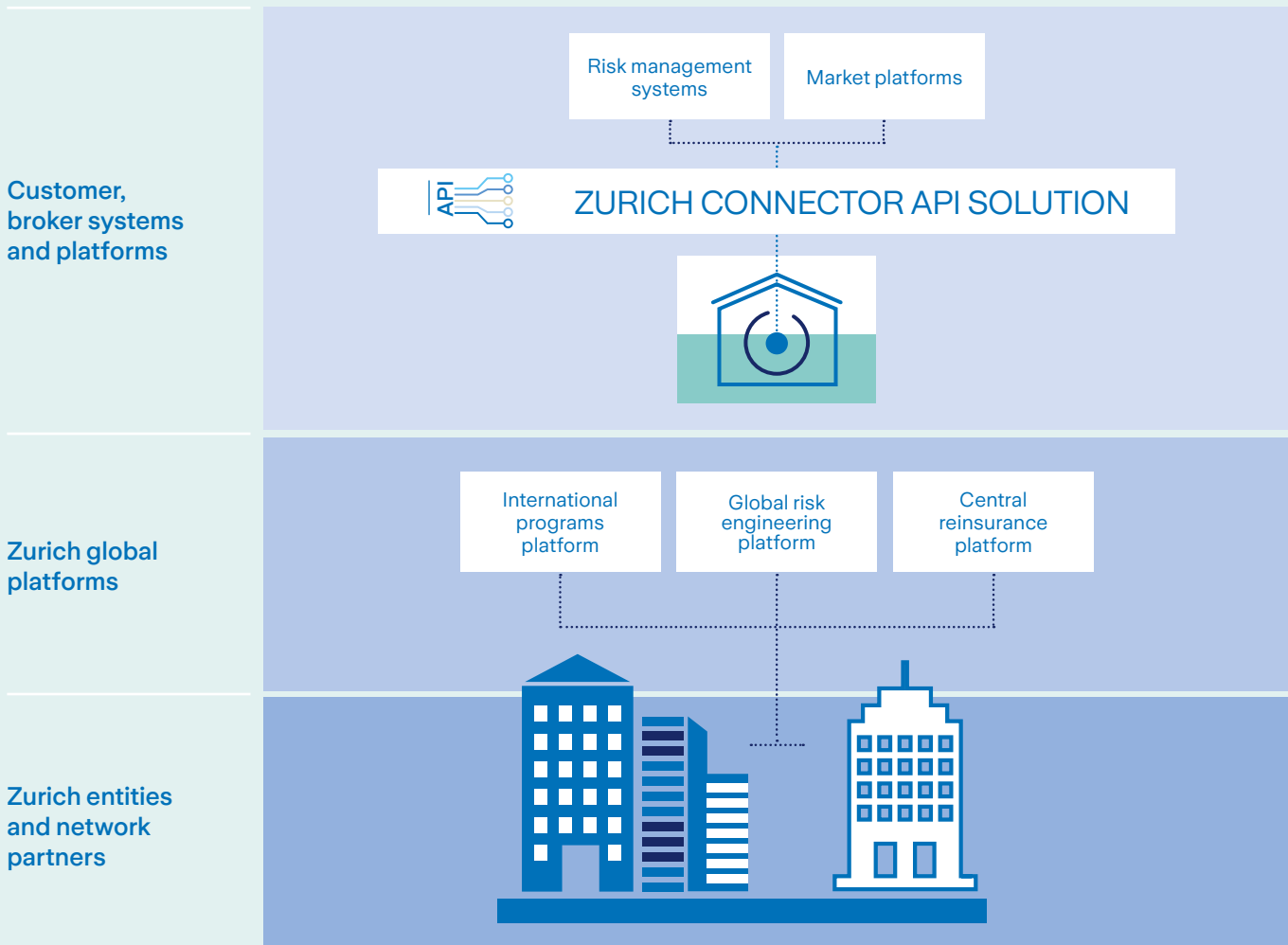
Zurich API Connector Solution



We can help you leverage your risk and insurance data more efficiently while complying with increasing regulation.

The increase in available data has created new opportunities for your business around loss prevention, risk transfer and total cost of risk. However, these opportunities must be balanced with the need to comply with increasing regulation and new risks.

An integrated, digital approach can give you the transparency and control you need to handle your risk management and insurance data effectively and efficiently. To achieve this, you can now directly connect your risk management system (RMIS) with our global platforms using Zurich Connector API Solution.



The benefits of Zurich Connector API Solution

Instantly available data

Data consistently 'flows' from Zurich's operational systems in real-time directly into your and/or your broker's risk management system.

Consistency and transparency

The latest insurance and risk engineering data is instantly available in your system and is in sync with Zurich's systems.

Efficiencies in administration

No more re-keying, manual uploads and cumbersome reconciliations.

What data is available?

Policy admin

Program data
Policies
Premium payments
Policy documents

Claims

Claims
Claims bookings
Claim reserves
Claims documents

Risk engineering

Location data
Loss scenarios
Risk improvement actions*
Visit schedules
Risk engineering documents



Life and Non-Life data



Life and Non-Life data



Non-Life data

* supports also bidirectional updates

What our customers say

“My wish for collaborating with insurance carriers in future must include technically an automated data exchange... An API to the insurance data... would lead to efficiency gains and cost savings. Error prone manual data transfers or misinterpretations would be minimized”.

Marcus Reichel, Global Head Insurance Management, Knauf

“For Nestlé directly connecting to Zurich via API has led to significant efficiency gains in insurance administration, both at head office and within our country entities..

We have seen the value of API connectivity for the insurance side. As next logical step we also want to leverage API to drive efficiency and control for our re insurance captive”.

Barbara Speth, Regional Insurance Manager and General Manager Reinsurance Captive, Nestlé

Make the connection

To find out more about Zurich API Connector Solution and how it could work for your business, please [click here](#) or contact your local Zurich representative.



This document has been prepared by Zurich Insurance Group Ltd and the opinions expressed therein are those of Zurich Insurance Group Ltd as of the date of the release and are subject to change without notice. This document has been produced solely for informational purposes. All information contained in this document has been compiled and obtained from sources believed to be reliable and credible but no representation or warranty, express or implied, is made by Zurich Insurance Group Ltd or any of its subsidiaries (the 'Group') as to their accuracy or completeness. This document is not intended to be legal, underwriting, financial, investment or any other type of professional advice. The Group disclaims any and all liability whatsoever resulting from the use of or reliance upon this document. Certain statements in this document are forward-looking statements, including, but not limited to, statements that are predictions of or indicate future events, trends, plans, developments or objectives. Undue reliance should not be placed on such statements because, by their nature, they are subject to known and unknown risks and uncertainties and can be affected by numerous unforeseeable factors. The subject matter of this document is also not tied to any specific insurance product nor will it ensure coverage under any insurance policy. This document may not be distributed or reproduced either in whole, or in part, without prior written permission of Zurich Insurance Group Ltd, Mythenquai 2, 8002 Zurich, Switzerland. Neither Zurich Insurance Group Ltd nor any of its subsidiaries accept liability for any loss arising from the use or distribution of this document. This document does not constitute an offer or an invitation for the sale or purchase of securities in any jurisdiction.

Zurich Insurance Group

